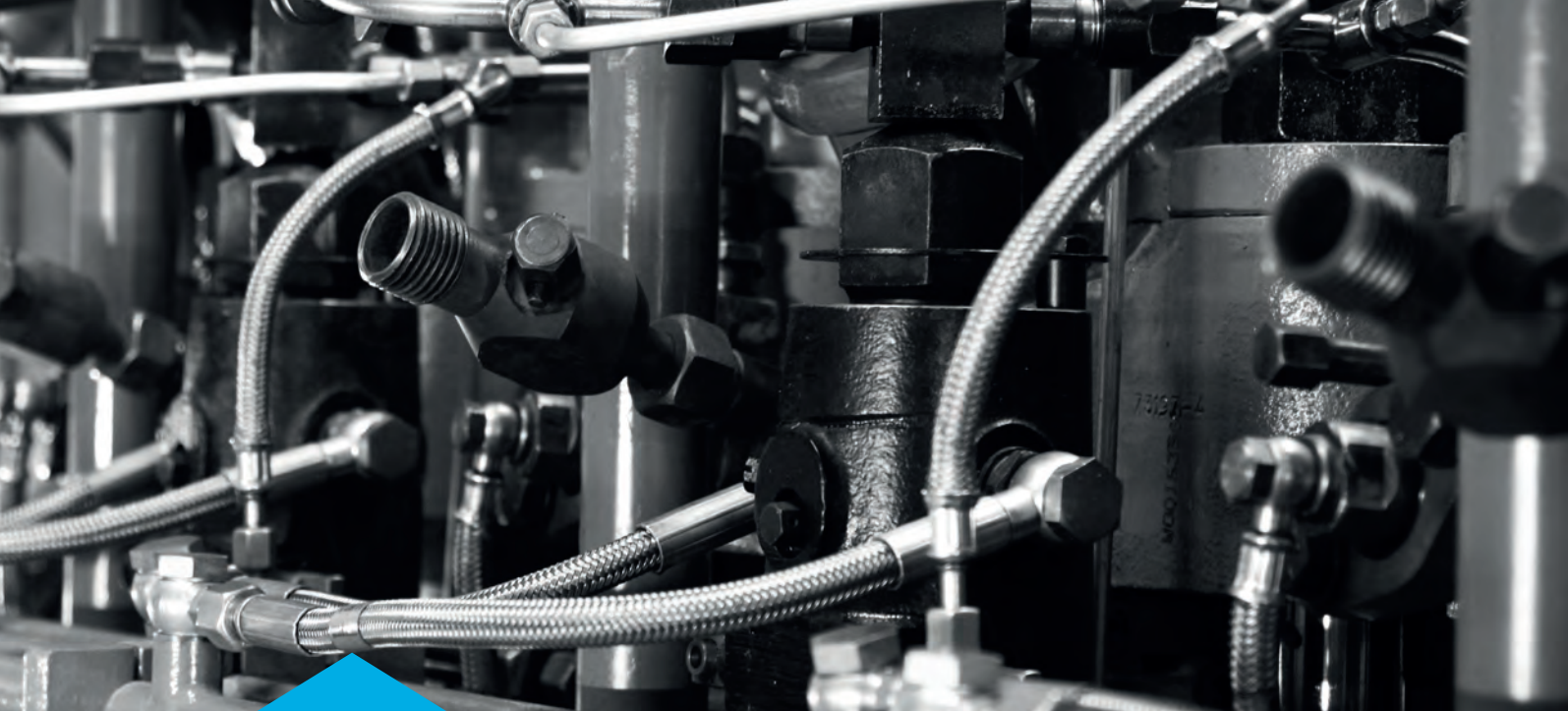




We **keep**  
them **running**

Quantiparts offers Genuine Engine Parts for the classic Wärtsilä engine brands



# Why QuantiParts?



Certified Genuine Engine Parts



Commitment and focus on our engine brands, consisting of more than 50 engine types



We offer parts and think in solutions



Competitive pricing and special offers



Best technical experts per brand and online support



Extensive stock covering most overhaul activities with fast delivery



With a passion for engines and keeping them running



Field services and engine expertise through our global network and distributors



# Let's keep them running

QuantiParts delivers 24-7 from an extensive stock of spare parts and offers a full scope of services. These include new and reconditioned parts, field services, test bed facilities, measurement and machining services with the best technical know-how available in the business. As the Original Engine Manufacturer (OEM) we can supply all required maintenance parts and major parts like crankshafts, engine blocks and short blocks which are needed to repair damages in the most reliable way. Through our global Wärtsilä network and distributors we offer cost efficient solutions, immediate response and the right parts on time.

## Founding year

### Sulzer

1834

First **A25**  
built 1965

First **A20**  
built 1975

### GMT

1966

### Stork

1868

Merged as  
**SWD** 1954

### Werkspoor

1827

First **F240**  
built 1954

First **TM410**  
built 1968

First **SW280**  
built 1981

### Bolnes

1928

First **Bolnes 190**  
built 1968



first **Vasa 22**  
built 1974

**Wärtsilä** acquires  
**GMT** 1966

**Wärtsilä** acquires  
**Bolnes** 1987

**Wärtsilä** acquires  
**SWD** 1989

**Wärtsilä** acquires  
**Sulzer/GMT** 1997

1834

**Wärtsilä** acquires  
**Nohab** 1986

**Wärtsilä** acquires  
**Wichmann** 1986

**Wärtsilä** acquires  
**Crepelle** 1987

**Wärtsilä** full ownership  
**SACM** 1993

### Nohab

1926

### Wichmann

1905

### Crepelle

1837

**André Koechlin  
& Co**

**SACM**  
1872

First **UD30**  
built 1954

1826

**Engine  
Poyaud**

**SSCM**  
1918

First **UD150**  
built 1950

First **UD25**  
built 1972

First **UD23**  
built 1991

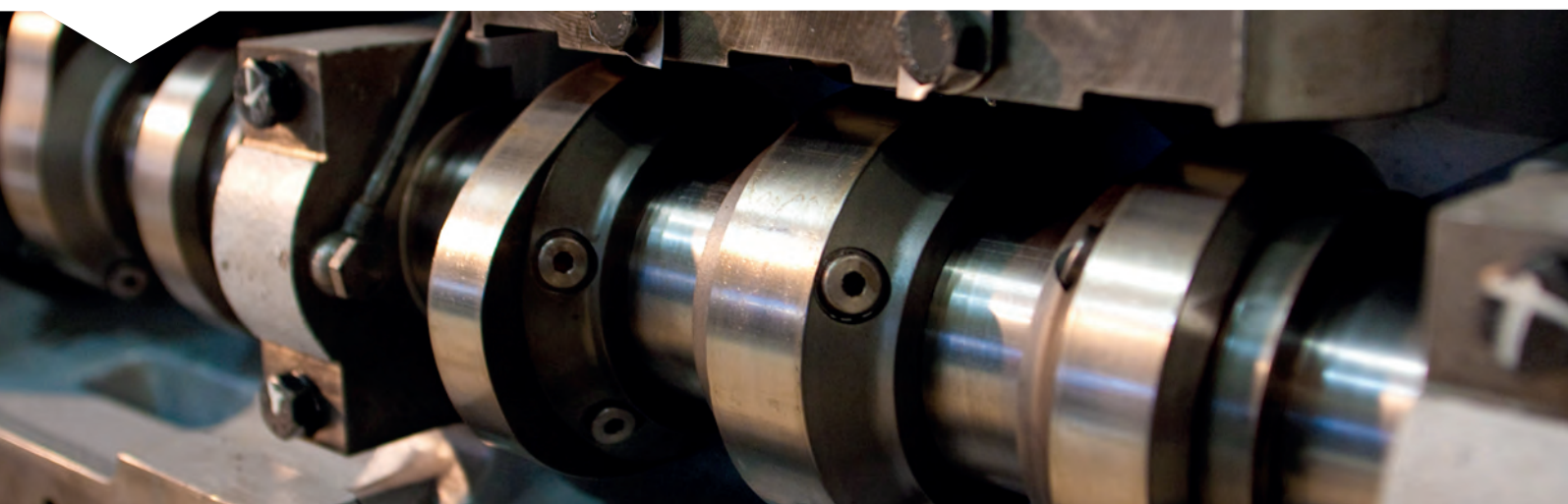
Merges as  
**SACM Diesel**  
1989

1910

**Wärtsilä** acquires  
**Deutz Marine  
Service rights**  
2005



founded 2015  
full focus on  
classic brands



# Supported engines



QuantiParts trades Genuine Engine spare Parts and provides services for Bolnes, Deutz, Deutz MWM, Stork Werkspoor Diesel, Sulzer A/S 4 stroke, SACM, Poyaud, Vasa 14/24, GMT, Vasa 22, Nohab, Wichmann and Crepelle engines. We are a Wärtsilä company and our technological heritage helps us to understand what our customers need and when.

**We are here for you and your engine!**

**WÄRTSILÄ VASA 22**

**WÄRTSILÄ DIESEL  
VASA 14/24**

**CREPELLE**

**DEUTZ  
MWM**



**A/S<sup>2025</sup> ENGINES**

**POYAUD**

**WICHMANN**



The central location of our stock in Zwolle, in the Netherlands, enables our dedicated experts to serve our customers efficiently wherever they need us.

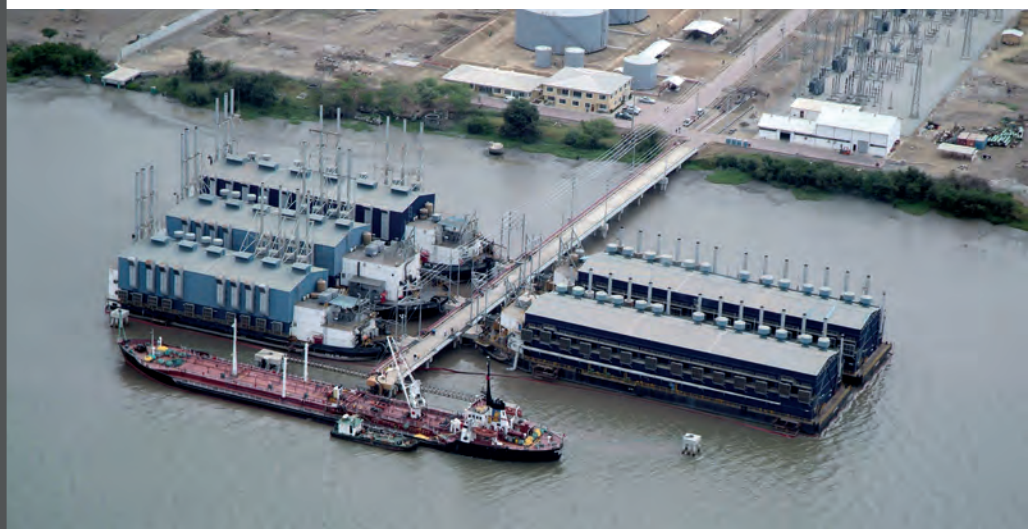
We stock parts for following engine types:

Stork Werkspoor	DR0210   F240   SW280   TM410   TM620
Sulzer A/S	A20   AL20   A25   AS25   AT25   S20   S20(U)
Bolnes	190
Poyaud	UD150   UD18   UD23   UD25
Deutz MWM	1822   232   234   440   441   444   484   510   500  501   601   602   604   604B   616   620   645
Deutz KHD	350   358   528   540   545   628   640   816

SACM	UD30
Crepelle	CR26   CR26VDF   SN   SN2 SN3   SNRR   PSN   PSNRR
Wärtsilä Diesel	VASA 14   VASA 24 VASA 22 ABC   MD/HF   22/26
Grandi Motori Trieste	GMT210   GMT230   GMT320   GMT420
Wichmann	AC   AX   28
Nohab	F10   F20   F30   WN25   WN25DF   WN25SG



**“Services  
all over the  
industry”**





For complete engine services

+31 88 980 2500

[sales@quantiparts.com](mailto:sales@quantiparts.com)

[www.quantiparts.com](http://www.quantiparts.com)



**QuantiParts BV**

Netherlands

**Head office and warehouse:**

Hanzelaan 95

8017 JE, Zwolle

The Netherlands

a **global** network of  
Service Units and Distributors

● = Service Units

● = Distributors

