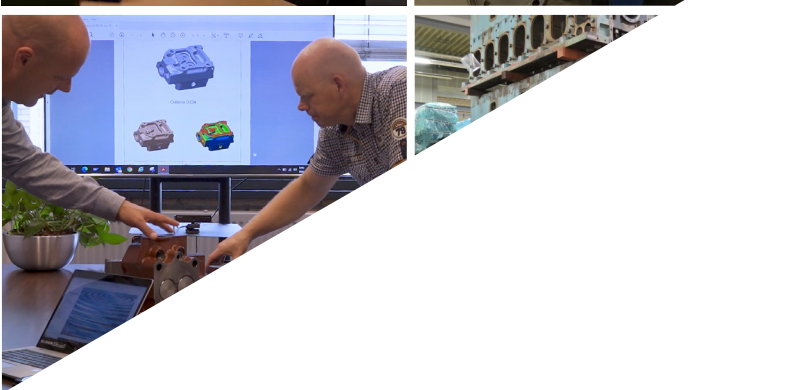


QuantiParts
A WÄRTSILÄ COMPANY



We **keep**
them **running**

Quantiparts offers Genuine Engine Parts for the classic Wärtsilä engine brands



Why QuantiParts?



Certified Genuine Engine Parts



Commitment and focus on our engine brands, consisting of more than 50 engine types



We offer parts and think in solutions



Competitive pricing and special offers



Best technical experts per brand and online support



Extensive stock covering most overhaul activities with fast delivery



With a passion for engines and keeping them running



Field services and engine expertise through our global network and distributors

Let's keep them running

QuantiParts delivers 24-7 from an extensive stock of spare parts and offers a full scope of services. These include new and reconditioned parts, field services, test bed facilities, measurement and machining services with the best technical know-how available in the business. As the Original Engine Manufacturer (OEM) we can supply all required maintenance parts and major parts like crankshafts, engine blocks and short blocks which are needed to repair damages in the most reliable way. Through our global Wärtsilä network and distributors we offer cost efficient solutions, immediate response and the right parts on time.

Founding year

Sulzer

1834

First **A25**
built 1965

First **A20**
built 1975

Wärtsilä acquires
**Deutz Marine
Service rights**
2005

GMT

1966



founded 2015
full focus on
classic brands

Stork

1868

Merged as
SWD 1954

Werkspoor

1827

First **F240**
built 1954

First **TM410**
built 1968

First **SW280**
built 1981

Bolnes

1928

First **Bolnes 190**
built 1968



first **Vasa 22**
built 1974

Wärtsilä acquires
Bolnes 1987

Wärtsilä acquires
SWD 1989

Wärtsilä acquires
Sulzer/GMT 1997

1834

Wärtsilä acquires
Nohab 1986

Wärtsilä acquires
Wichmann 1986

Wärtsilä acquires
Crepelle 1987

Wärtsilä full
ownership
SACM 1993

Nohab

1926

Wichmann

1905

First **CR26**
built 1963

First **w200**
built 1994

Crepelle

1837

**André Koechlin
& Co**

SACM
1872

First **UD30**
built 1954

1826

**Engine
Poyaud**

SSCM
1918

First **UD150**
built 1950

First **UD25**
built 1972

First **UD23**
built 1991

Merges as
SACM Diesel
1989

1910



Supported engines



QuantiParts trades Genuine Engine spare Parts and provides services for Bolnes, Deutz, Deutz MWM, Stork Werkspoor Diesel, Sulzer A/S 4 stroke, SACM, Poyaud, Vasa 14/24, GMT, Vasa 22, Nohab, Wärtsilä 200/220, Wichmann and Crepelle engines. We are a Wärtsilä company and our technological heritage helps us to understand what our customers need and when. **We are here for you and your engine!**

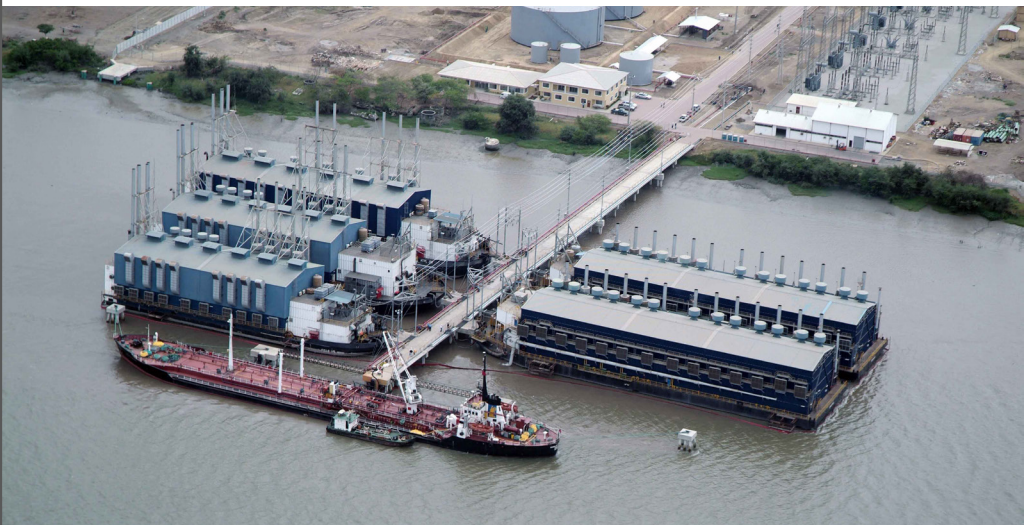


The central location of our stock in Hattem, in the Netherlands, enables our dedicated experts to serve our customers efficiently wherever they need us.

We stock parts for following engine types:

Stork Werkspoor	DR0210 F240 SW280 TM410 TM620	SACM	UD30 / MGO
Sulzer A/S	A20 AL20 A25 AS25 AT25 S20 S20(U)	Crepelle	CR26 CR26VDF SN SN2 SN3 SNRR PSN PSNRR
Bolnes	190	Wärtsilä Diesel	VASA 14 VASA 24 VASA 22 ABC MD/HF 22/26
Poyaud	UD150 UD18 UD23 UD25	Grandi Motori Trieste	GMT210 GMT230 GMT320 GMT420
Deutz MWM	232 234 440 441 484 510 500 501 601 602 604 604B 616 620 645	Wichmann	AC AX 28
Deutz KHD	350 358 528 540 545 628 640 816	Nohab	F10 F20 F30 WN25 WN25DF WN25SG
		Wärtsilä	W200 W220

“Services
all over the
industry”



For complete engine services



QuantiParts BV

Netherlands

Head office and warehouse:

Innovatiestraat 4
8051 TC, Hattem
The Netherlands

+31 88 980 2500
sales@quantiparts.com
www.quantiparts.com



a **global** network of
Service Units
and Distributors

- = Service Units
- = Distributors

